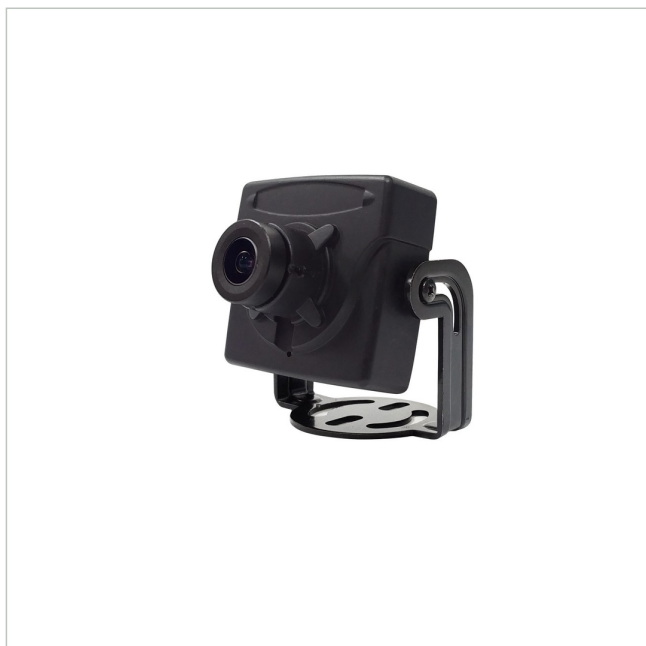




# eneo MSM-42F0028M0B

SKU: 243653

EAN: 4260229841358



1/2.8" HD Board Camera, Colour, 1920x1080, 2,8mm, WDR, Housing, 12VDC

## Main Features

1/2,8" 2 Megapixel SONY STARVIS 2 CMOS-Sensor	Digital signal: EX-SDI, HD-SDI selectable
Super low light performance by Sony STARVIS 2 technology	Fixed 2.8mm
Board Camera with rugged metal cabinet	Electronic Day/Night function
Resolution max. 1920x1080 (Full HD)	ROI (Region of Interest) WDR mode
Separate outputs for digital and multi-signal	Integrated motion detector, defog, privacy zones
Multisignal: HD-TVI, AHD, CVI and Composite selectable	

## Specifications

General	
Dimensions (WxHxD) (extended)	37x37,8x27mm
Weight	0.11 kg
Text overlay	available
Color (Housing)	black
Housing type	Inside
Housing material	Aluminium
Camera Type	Board Camera
Power consumption	1.5 W
Mounting type	Ceiling, Wall

# eneo MSM-42F0028M0B

Continuation of the specifications

Power supply	12VDC
Temperature Range (Operating)	-10°C ~ +50°C,@ Luftfeuchtigkeit 20%-80% (nicht kondensierend)
Wide Dynamic Range (WDR)	D-WDR
<b>Camera</b>	
Backlight compensation	Yes
Low Speed Shutter	Yes
Recording sensor	CMOS
Chip size	1/2,8"
Flickerless function	Yes
Camera shape	Module
Signal-to-noise ratio	50 dB
Day/night mode	Automatic,Day,Night,extern (Sensor)
White balance	Automatic,Preset,Manual,AUTOext
Photosensitivity	0,2Lux@F2,3
System	Color
Day/night switching	Switchable IR Filter (ICR)
<b>Display</b>	
Image resolution max.	1920x1080
<b>DORI</b>	
Watch (62px/m)	18 m
Detect (125px/m)	8,8 m
Identify (250px/m)	4,2 m
Perceiving (25px/m)	45,9 m
<b>Functions</b>	
Motion detector	Yes
Digital Noise Reduction (DNR)	Yes
Menu languages	Chinese, English, French, German, Japanese, Korean
<b>Notes</b>	
Remark	NDAA compliance under Section 889
<b>Interfaces / Inputs/ Outputs</b>	
Alarm inputs	0
Number of alarm outputs	0
External connections	voltage input,1x SDI Signal (BNC),1x HD/SD Analog Signal (BNC)
Interface Protocols	UTC (HD Signal Format)
Control Interfaces	Coaxitron (HD Protocol)
Video Outputs	AHD, Composite (FBAS)
<b>Parts supplied</b>	
Scope of delivery	Quick Installation Guide,2x mounting screws,OSD menu control board,video sub-output cable

# eneo MSM-42F0028M0B

Continuation of the specifications

<b>Lens</b>	
Horizontal angle of view	97°
Vertical angle of view	48°
Focal length	2,8 mm
Lens Type	Prime lens
Zoom Factor (Digital)	0
<b>Video</b>	
Resolution (extended)	1920x1080,1280x720,720x576,720x480
Signal Format	AHD @ 2MP, Composite (FBAS), EX-SDI @ 2MP, HD-SDI @ 2MP
<b>Product labeling:</b>	
EAN/GTIN	4260229841358
Manufacturer order number	243653
Series	eneo COAXIZE

## Optional Services

SKU	Name	Description
229233	Vorkonfiguration analoge Kamera	Preconfiguration 1x analog camera Function test, FW update

## Your contact person

VIDEOR E. Hartig GmbH  
 Carl-Zeiss-Straße 8  
 63322 Rödermark  
 Germany

