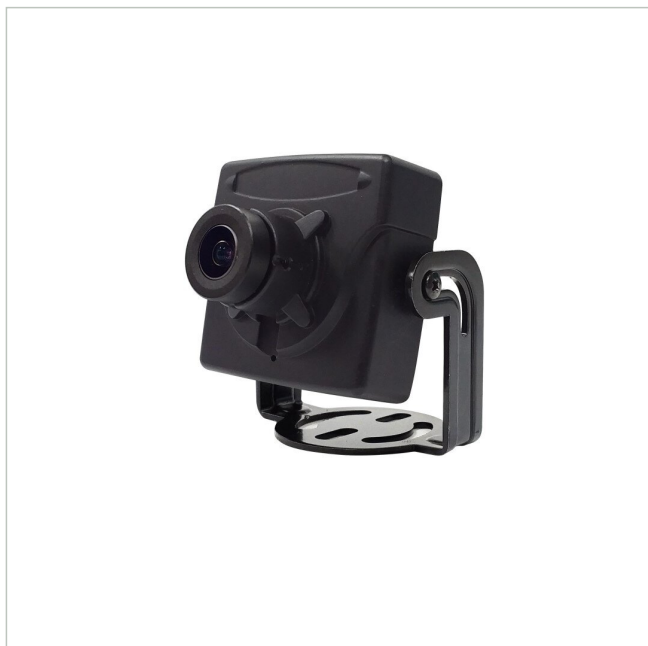




# eneo MSM-42F0028M0A

SKU: 217647



1/2.8" HD Board Camera, Colour, 1920x1080, 2,8mm, WDR, Housing, 12VDC

## Main Features

- 1/2,8" 2 Megapixel SONY STARVIS CMOS-Sensor
- Board Camera with rugged metal cabinet
- Resolution max. 1920x1080 (Full HD)
- Separate outputs for digital and multi-signal
- Multisignal: HD-TVI, AHD, CVI and Composite selectable

- Digital signal: EX-SDI, HD-SDI selectable
- Fixed 2.8mm
- Electronic Day/Night function
- ROI (Region of Interest) WDR mode
- Integrated motion detector, defog, privacy zones

## Specifications

| General                       |               |
|-------------------------------|---------------|
| Dimensions (WxHxD) (extended) | 37x37,8x27mm  |
| Weight                        | 0.11 kg       |
| Text overlay                  | available     |
| Color (Housing)               | black         |
| Housing type                  | Inside        |
| Housing material              | Metal         |
| Camera Type                   | Board Camera  |
| Power consumption             | 1.8 W         |
| Mounting type                 | Ceiling, Wall |
| Power supply                  | 12VDC         |
| Temperature Range (Operating) | -10°C ~ +50°C |

# eneo MSM-42F0028M0A

Continuation of the specifications

|                                     |  |
|-------------------------------------|--|
| Wide Dynamic Range (WDR)            | WDR 113dB  |
| <b>Camera</b>                       |  |
| Backlight compensation              | Yes  |
| Low Speed Shutter                   | Yes  |
| Recording sensor                    | CMOS   |
| Chip size                           | 1/2,8"   |
| Flickerless function                | Yes  |
| Camera shape                        | Module   |
| Signal-to-noise ratio               | 50 dB  |
| Day/night mode                      | not available  |
| White balance                       | Automatic, Preset, Manual  |
| Photosensitivity                    | 0,08 Lux bei F1,4,40 IRE   |
| System                              | Color  |
| Day/night switching                 | No   |
| <b>Display</b>                      |  |
| Image resolution max.               | 1920x1080  |
| <b>DORI</b>                         |  |
| Watch (62px/m)                      | 18 m   |
| Detect (125px/m)                    | 8,8 m  |
| Identify (250px/m)                  | 4,2 m  |
| Perceiving (25px/m)                 | 45,9 m   |
| <b>Functions</b>                    |  |
| Motion detector                     | Yes  |
| Digital Noise Reduction (DNR)       | Yes  |
| Menu languages                      | Chinese, English, German, Japanese, Korean                       |
| <b>Notes</b>                        |  |
| Remark                              | NDAA compliance under Section 889                                |
| <b>Interfaces / Inputs/ Outputs</b> |  |
| Alarm inputs                        | 0  |
| Number of alarm outputs             | 0  |
| External connections                | voltage input, 1x SDI Signal (BNC), 1x HD/SD Analog Signal (BNC) |
| Interface Protocols                 | UTC (HD Signal Format)   |
| Control Interfaces                  | Coaxitron (HD Protocol)  |
| Video Outputs                       | AHD, Composite (FBAS), CVI                                       |
| <b>Parts supplied</b>               |  |
| Scope of delivery                   | manual, mounting accessories                                     |
| <b>Lens</b>                         |  |
| Horizontal angle of view            | 112°   |
| Vertical angle of view              | 59°  |
| Iris Control                        | No   |
| Focal length                        | 2,8 mm   |

# eneo MSM-42F0028M0A

Continuation of the specifications

|                           |  |
|---------------------------|--|
| Lens Type                 | Prime lens   |
| Zoom Factor (Digital)     | 0  |
| <b>Video</b>              |  |
| Resolution (extended)     | 1920x1080,1280x720,720x576   |
| Signal Format             | AHD @ 2MP, Composite (FBAS), CVI @ 2MP, EX-SDI @ 2MP, HD-SDI @ 2MP, HD-TVI @ 2MP |
| <b>Product labeling:</b>  |  |
| Manufacturer order number | 217647   |
| Series                    | eneo COAXIZE   |

## Your contact person

VIDEOR E. Hartig GmbH  
Carl-Zeiss-Straße 8  
63322 Rödermark  
Germany

